



Meet the
Newest Member
of Your Crew

BMP™ 21 LABEL PRINTER

BMP™21 LABEL PRINTER



Features & Benefits

- Automatic data serialization and built-in text, graphics and barcodes
- Prints on PermaSleeve™ heat shrink sleeves, continuous self-laminating material and more...
- Prints continuous labels up to 3/4" wide
- Access to 80 different symbols, 48 general identification symbols, 19 electrical symbols and including 13 datacomm symbols
- Internal memory for storing, retrieving and deleting label files
- Ergonomic dual cutter buttons hold the label until you need it
- Flashlight accessory for seeing in dark spaces

GENERAL I.D.

In the industrial workplace, productivity pays off. That's why Brady's BMP™21 Portable Label Printer creates high quality, durable labels more efficiently than ever before. Equip your team with the BMP21™ label printer and be on your way to a safer, more productive workplace.

Faster, More Efficient Labeling

- Magnet and wrist-strap for one-handed operation
- Automated serialized printing
- Built-in symbols
- Industrial strength dual cutter that holds labels until you need them

Durable, Made-to-Last Labels

- Wide array of label types and sizes
- Labels withstand extreme temperatures, irregular surfaces, and chemicals
- Vinyl material lasts up to 5 yrs in extreme outdoor conditions

All-in-One Industrial Labeling Tool

- Crystal clear thermal transfer printing
- On demand labels for organizing and identifying



Labeling Applications:

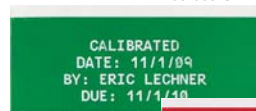
- Equipment Identification • Bin and Shelf Labels • Asset Identification
- Safety/Directional Identification • Secondary Container Identification
- Lean Identification • Calibration Labels • Hardhat Labels and more



Actual Labels:



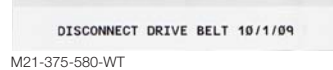
M21-750-580-OR



M21-375-580-GN



M21-500-580-RD



M21-375-580-WT



M21-375-580-YL

ELECTRICAL

For years, you've counted on Brady for high performance, industrial strength labels. Now, Brady's taken its most popular wire identification materials and made them available in an easy to use, economical printer – the BMP™21 Portable Label Printer.

Fool-Proof Traceability

The BMP™21 label printer:

- Recognizes when you insert a new cartridge
- Allows you to add text, symbols or barcodes on the same label
- Prints self-laminating wire markers for long lasting traceability



Faster, More Efficient Labeling

- Advanced serialization
- Magnet and wrist strap for one-handed operation
- Dual cutter buttons cut and hold the labels until you remove them
- Optional flashlight accessory for dark areas

Extreme Staying Power of Brady Labels

Even in severe temperatures, you can depend on Brady labels to stick and stay stuck. Whether it's a smooth, curved, textured or highly textured surface, Brady has a label material for every application.

Electrical Labeling Applications:

- Wire & Cable Identification • Inside and Outside of Electrical Panels • Terminal Blocks
- Rating Plates • Self-Laminating Wire Identification • Tool and Equipment Identification



Actual Labels:



M21-750-580-OR



M21-500-580-YL



M21-375-580-WT



M21-1000-427



M21-275-C-342

DATA COMM

Why spend time creating labels that are difficult to read and don't stick? With the BMP™21 Portable Label Printer, you can be confident your labels will stay stuck for years. Specifically designed for industrial environments, Brady's labels stay legible, identifiable, and most importantly, attached.

All-in-One Voice/Data Comm Labeler

- 80 different symbols, including 13 specific to voice and data comm
- Labels stay stuck on smooth, curved, textured and highly textured surfaces, even in extreme temperatures

High Quality, Made-to-Last Labels

- Clear, traceable labels everytime
- Self-laminating wire identification
- Magnet and pole strap for one-handed operation
- 203 dpi thermal transfer print
- Optional flashlight accessory for dark areas



Extreme Staying Power of Brady Labels

Even in severe temperatures, you can depend on Brady labels to stick and stay stuck. Whether it's a smooth, curved, textured or highly textured surface, Brady has a label material for every application.

DataComm Labeling Applications:

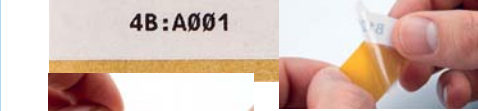
- Cable and Wire Identification Including Self-Laminating Labels • Patch Panels
- Panel Identification • Faceplate Identification • Tool and Equipment Identification



Actual Labels:



M21-375-499-TB



M21-1000-427



M21-275-C-342



M21-375-499-TB

PRINTER

Catalog No.	Product Description	UOM
BMP21	BMP21 MOBILE PRINTER	PC
BMP-KIT-110943	BMP21 Printer Kit with AC Adapter	KIT
BMP21-KIT-110942	BMP21 Printer Kit with Carrying Case	KIT
BMP21-KIT-110941	BMP21 Printer Kit with Carrying Case and AC Adapter	KIT
BMP21-KIT-110940	BMP21 Printer Kit with Carrying Case, AC Adapter and Multifunctional Tool	KIT
BMP21-KIT-114305	BMP21 Printer Kit with Multifunctional Accessory	KIT

ACCESSORIES

Catalog No.	Product Description	UOM
BMP21-AC	AC ADAPTER BMP21 CLASS B	PC
BMP21-HC	BMP21 HARDSIDE CARRYING CASE	PC
BMP21-MAGNET	BMP21 MAGNET ONLY ACCESSORY	PC
BMP21-TOOL	BMP21 MULTIFUNCTIONAL ACCESSORY	PC

CARTRIDGES

Catalog No.	Material	Application	Size	Printable Area	UOM
M21-1000-427	Self-Laminating Vinyl	Communications Cables, Panel Identification, Voice/Data Identification, Wire & Cable Marking	1.00" W x 14' H (25.4 mm W x 4.27 m H)	14' W x 0.375" H (4.27 m H x 9.530 mm W)	ROLL
M21-1250-427	Self-Laminating Vinyl	Communications Cables, Panel Identification, Voice/Data Identification, Wire & Cable Marking	1.25" W x 14' H (31.75 mm W x 4.27 m H)	14' W x 0.500" H (4.27 m H x 12.700 mm W)	ROLL
M21-125-C-342	PermaSleeve Heat-Shrink Polyolefin	Panel Identification, Wire & Cable Marking	0.235" W x 7' H (5.970 mm W x 2.13 m H)	0.125" W x 7' H (5.970 mm W x 2.13 m H)	ROLL
M21-1500-427	Self-Laminating Vinyl	Communications Cables, Panel Identification, Voice/Data Identification, Wire & Cable Marking	1.5" W x 14' H (38.1 mm W x 4.27 m H)	14' W x 0.500" H (4.27 m H x 12.700 mm W)	ROLL
M21-187-C-342	PermaSleeve Heat-Shrink Polyolefin	Panel Identification, Wire & Cable Marking	0.335" W x 7' H (8.510 mm W x 2.13 m H)	0.335" W x 7' H (8.510 mm W x 2.13 m H)	ROLL
M21-250-C-342	PermaSleeve Heat-Shrink Polyolefin	Panel Identification, Wire & Cable Marking	0.439" W x 7' H (11.150 mm W x 2.13 m H)	0.439" W x 7' H (11.150 mm W x 2.13 m H)	ROLL
M21-375-423	Permanent Polyester	Desi-Strip Inserts, General ID, General ID, Laboratory ID, Location ID, Outlet/Jack ID, Panel ID, Patch Panel, ID Port, Plate, Voice/Data ID	0.375" W x 21' H (9.530 mm W x 6.400 m H)	0.375" W x 21' H (9.530 mm W x 6.400 m H)	ROLL
M21-375-430	Clear Polyester	General ID, Laboratory ID, Location ID, Outlet/Jack ID, Panel ID, Patch Panel, ID Port, Plate, Voice/Data ID	0.375" W x 21' H (9.530 mm W x 6.400 m H)	0.375" W x 21' H (9.530 mm W x 6.400 m H)	ROLL
M21-375-461	Self-Laminating Polyester	General ID, Laboratory ID, Plate, Vial	0.375" W x 21' H (9.530 mm W x 6.400 m H)	0.375" W x 21' H (9.530 mm W x 6.400 m H)	ROLL
M21-375-488	High-Performance Polyester	General ID, Laboratory ID, Plate, Slide, Through Hole - Top	0.375" W x 21' H (9.530 mm W x 6.400 m H)	0.375" W x 21' H (9.530 mm W x 6.400 m H)	ROLL
M21-375-499	Nylon Cloth	Communications Cables, General ID, Laboratory ID, Panel ID, Plate, Vial, Voice/Data Identification, Wire & Cable Marking	0.375" W x 16' H (9.530 mm W x 4.88 m H)	0.375" W x 1' H (9.530 mm W x 4.880 m H)	ROLL
M21-375-499-TB	Nylon Cloth	Communications Cables, General ID, Panel ID, Patch Panel, Plate, Terminal Blocks, Vial, Voice/Data ID, Wire & Cable Marking	0.375" W x 16' H (9.530 mm W x 4.88 m H)	0.375" W x 16' H (9.530 mm W x 4.880 m H)	ROLL
M21-375-580-BL	Permanent Vinyl	General ID, Laboratory ID, Panel ID, Plate	0.375" W x 21' H (9.530 mm W x 6.400 m H)	0.375" W x 21' H (9.530 mm W x 6.400 m H)	ROLL
M21-375-580-GN	Permanent Vinyl	General ID, Laboratory ID, Panel ID, Plate	0.375" W x 21' H (9.530 mm W x 6.400 m H)	0.375" W x 21' H (9.530 mm W x 6.400 m H)	ROLL
M21-375-580-OR	Permanent Vinyl	General ID, Laboratory ID, Panel ID, Plate	0.375" W x 21' H (9.530 mm W x 6.400 m H)	0.375" W x 21' H (9.530 mm W x 6.400 m H)	ROLL
M21-375-580-RD	Permanent Vinyl	General ID, Laboratory ID, Panel ID, Plate	0.375" W x 21' H (9.530 mm W x 6.400 m H)	0.375" W x 21' H (9.530 mm W x 6.400 m H)	ROLL
M21-375-580-WT	Permanent Vinyl	General ID, Laboratory ID, Panel ID, Plate	0.375" W x 21' H (9.530 mm W x 6.400 m H)	0.375" W x 21' H (9.530 mm W x 6.400 m H)	ROLL
M21-375-580-YL	Permanent Vinyl	General ID, Laboratory ID, Panel ID, Plate	0.375" W x 21' H (9.530 mm W x 6.400 m H)	0.375" W x 21' H (9.530 mm W x 6.400 m H)	ROLL
M21-375-C-342	PermaSleeve Heat-Shrink Polyolefin	Panel Identification, Wire & Cable Marking	0.645" W x 7' H (16.380 mm W x 2.13 m H)	0.645" W x 7' H (16.380 mm W x 2.13 m H)	ROLL
M21-500-423	Permanent Polyester	General ID, Laboratory ID, Location ID, Outlet/Jack ID, Panel ID, Patch Panel, ID Port, Plate, Voice/Data ID, Wire & Cable Marking	0.500" W x 21' H (12.700 mm W x 6.400 m H)	0.500" W x 21' H (12.700 mm W x 6.400 m H)	ROLL
M21-500-430	Clear Polyester	General ID, Laboratory ID, Location ID, Outlet/Jack ID, Panel ID, Patch Panel, ID Port, Plate, Voice/Data ID, Wire & Cable Marking	0.500" W x 21' H (12.700 mm W x 6.400 m H)	0.500" W x 21' H (12.700 mm W x 6.400 m H)	ROLL
M21-500-461	Self-Laminating Polyester	General ID, Laboratory ID, Plate, Vial	0.500" W x 21' H (12.700 mm W x 6.400 m H)	0.500" W x 21' H (12.700 mm W x 6.400 m H)	ROLL
M21-500-488	High-Performance Polyester	General ID, Laboratory ID, Plate, Slide, Through Hole - Top	0.500" W x 21' H (12.700 mm W x 6.400 m H)	0.500" W x 21' H (12.700 mm W x 6.400 m H)	ROLL
M21-500-499	Nylon Cloth	Communications Cables, General ID, Laboratory ID, Panel ID, Patch Panel, Plate, Vial, Voice/Data ID, Wire & Cable Marking	0.500" W x 16' H (12.700 mm W x 4.88 m H)	0.500" W x 19' H (12.700 mm W x 5.790 m H)	ROLL
M21-500-499-TB	Nylon Cloth	Communications Cables, General ID, Panel ID, Patch Panel, Plate, Terminal Blocks, Vial, Voice/Data ID, Wire & Cable Marking	0.500" W x 16' H (12.700 mm W x 4.88 m H)	0.500" W x 19' H (12.700 mm W x 5.790 m H)	ROLL
M21-500-580-BL	Permanent Vinyl	General ID, Laboratory ID, Panel ID, Plate	0.500" W x 21' H (12.700 mm W x 6.400 m H)	0.500" W x 21' H (12.700 mm W x 6.400 m H)	ROLL
M21-500-580-GN	Permanent Vinyl	General ID, Laboratory ID, Panel ID, Plate	0.500" W x 21' H (12.700 mm W x 6.400 m H)	0.500" W x 21' H (12.700 mm W x 6.400 m H)	ROLL
M21-500-580-OR	Permanent Vinyl	General ID, Laboratory ID, Panel ID, Plate	0.500" W x 21' H (12.700 mm W x 6.400 m H)	0.500" W x 21' H (12.700 mm W x 6.400 m H)	ROLL
M21-500-580-RD	Permanent Vinyl	General ID, Laboratory ID, Panel ID, Plate	0.500" W x 21' H (12.700 mm W x 6.400 m H)	0.500" W x 21' H (12.700 mm W x 6.400 m H)	ROLL
M21-500-580-WT	Permanent Vinyl	General ID, Laboratory ID, Panel ID, Plate	0.500" W x 21' H (12.700 mm W x 6.400 m H)	0.500" W x 21' H (12.700 mm W x 6.400 m H)	ROLL
M21-500-580-YL	Permanent Vinyl	General ID, Laboratory ID, Panel ID, Plate	0.500" W x 21' H (12.700 mm W x 6.400 m H)	0.500" W x 21' H (12.700 mm W x 6.400 m H)	ROLL
M21-750-423	Permanent Polyester	General ID, Laboratory ID, Panel ID, Plate, Voice/Data ID	0.750" W x 21' H (19.050 mm W x 6.400 m H)	0.750" W x 21' H (19.050 mm W x 6.400 m H)	ROLL
M21-750-427	Self-Laminating Vinyl	Communications Cables, Panel Identification, Voice/Data Identification, Wire & Cable Marking	0.75" W x 14' H (19.05 mm W x 4.27 m H)	14' W x 0.375" H (4.27 m H x 9.530 mm W)	ROLL
M21-750-430	Clear Polyester	General ID, Laboratory ID, Panel ID, Patch Panel - ID Port, Plate, Voice/Data ID	0.750" W x 21' H (19.050 mm W x 6.400 m H)	0.750" W x 21' H (19.050 mm W x 6.400 m H)	ROLL
M21-750-461	Self-Laminating Polyester	General ID, Laboratory ID, Plate, Vial	0.750" W x 21' H (19.050 mm W x 6.400 m H)	0.750" W x 21' H (19.050 mm W x 6.400 m H)	ROLL
M21-750-488	High-Performance Polyester	General ID, Laboratory ID, Plate, Slide, Through Hole - Top	0.750" W x 21' H (19.050 mm W x 6.400 m H)	0.750" W x 21' H (19.050 mm W x 6.400 m H)	ROLL
M21-750-499	Nylon Cloth	Communications Cables, General ID, Laboratory ID, Panel ID, Plate, Vial, Voice/Data ID, Wire & Cable Marking	0.750" W x 16' H (19.050 mm W x 4.88 m H)	0.750" W x 19' H (19.050 mm W x 5.790 m H)	ROLL
M21-750-580-BL	Permanent Vinyl	General ID, Laboratory ID, Panel ID, Plate, Voice/Data ID	0.750" W x 21' H (19.050 mm W x 6.400 m H)	0.750" W x 21' H (19.050 mm W x 6.400 m H)	ROLL
M21-750-580-GN	Permanent Vinyl	General ID, Laboratory ID, Panel ID, Plate, Voice/Data ID	0.750" W x 21' H (19.050 mm W x 6.400 m H)	0.750" W x 21' H (19.050 mm W x 6.400 m H)	ROLL
M21-750-580-OR	Permanent Vinyl	General ID, Laboratory ID, Panel ID, Plate	0.750" W x 21' H (19.050 mm W x 6.400 m H)	0.750" W x 21' H (19.050 mm W x 6.400 m H)	ROLL
M21-750-580-RD	Permanent Vinyl	General ID, Laboratory ID, Panel ID, Plate, Voice/Data ID	0.750" W x 21' H (19.050 mm W x 6.400 m H)	0.750" W x 21' H (19.050 mm W x 6.400 m H)	ROLL
M21-750-580-WT	Permanent Vinyl	General ID, Laboratory ID, Panel ID, Plate	0.500" W x 21' H (12.700 mm W x 6.400 m H)	0.500" W x 21' H (12.700 mm W x 6.400 m H)	ROLL
M21-750-580-YL	Permanent Vinyl	General ID, Laboratory ID, Panel ID, Plate, Wire & Cable Marking	0.750" W x 21' H (19.050 mm W x 6.400 m H)	0.750" W x 21' H (19.050 mm W x 6.400 m H)	ROLL



Brady Corporation Asia Pte Ltd

1 Kaki Bukit Crescent
Singapore 416236

Tel: 65 6477 7261 Fax: 65 6383 2229

www.bradyid.com SEA_marketing@ap.bradycorp.com