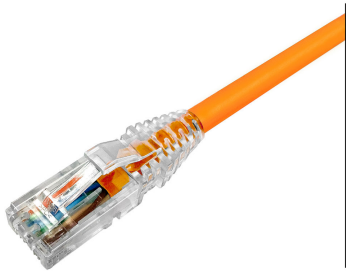


NPC06UZDB-OR



NPC RJ45 Patch Cord, category 6, U/UTP, LSZH, orange

- High-performance patch cords exceeding industry standards supporting NETCONNECT channel specifications
- Standardized transparent, slim-line boots provides consistent patch cord appearance and supports highest density applications
- Colored clips are available to fit the transparent boot, eliminating the need of multiple colors for matching every jacket color
- Colored pull latch tabs are available for easier plug release handling from the modular jack

Product Classification

Regional Availability	Asia EMEA Latin America
Portfolio	NETCONNECT®
Product Type	Twisted pair patch cord
Product Series	NPC

General Specifications

ANSI/TIA Category	6
Cable Type	U/UTP (unshielded)
Conductor Type	Stranded
Interface Feature, connector A	Standard
Interface Feature, connector B	Standard
Interface, Connector A	RJ45 plug
Interface, Connector B	RJ45 plug
Jacket Color	Orange
Pairs, quantity	4
Wiring	T568B

Dimensions

Cable Assembly Length, minimum (m)	1
Cable Assembly Length, maximum (m)	100
Diameter Over Jacket	5.97 mm 0.235 in
Compatible Conductor Gauge, stranded	24 AWG

Ordering Tree

NPC06UZDB-OR

Included Products

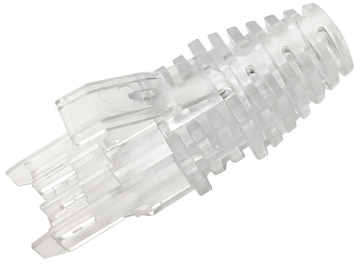
2 8 4 3 0 2 0 - 3

MP-6AU-Boot-59-1 — Integrated Boot and Pair Manager for MP-6AU, size 59, transparent

6 - 2 8 4 3 0 0 7 - 1

MP-6AU-Plug-A-1 — Modular Plug, Category 6A/6, Unshielded, Cond Insulation OD - 0.99mm, 100 pcs

2843020-3 | MP-6AU-Boot-59-1



Integrated Boot and Pair Manager for MP-6AU, size 59, transparent

Product Classification

Regional Availability	Asia Australia/New Zealand EMEA Latin America North America
Portfolio	CommScope®
Product Type	Modular plug boot

General Specifications

Boot Feature	Color-clip compatible Pull-tab compatible Slimline Snagless
Color	Clear
Compatible Plug Type	Cat 6 Cat 6A

Dimensions

Compatible Cable Diameter, maximum	6.2 mm 0.244 in
Compatible Cable Diameter, minimum	5.6 mm 0.22 in

Packaging and Weights

Included	Strain relief
Packaging quantity	100
Packaging Type	Bag Box

Regulatory Compliance/Certifications

Agency	Classification
CHINA-ROHS	Below maximum concentration value
REACH-SVHC	Compliant as per SVHC revision on www.commscope.com/ProductCompliance
ROHS	Compliant



6-2843007-1 | MP-6AU-Plug-A-1



Modular Plug, Category 6A/6, Unshielded, Cond Insulation OD - 0.99 mm, 100 pcs

Product Classification

Regional Availability	Asia Australia/New Zealand EMEA Latin America North America
Portfolio	CommScope®
Product Type	Modular plug

General Specifications

ANSI/TIA Category	6 6A
Cable Type	Round, unshielded
Conductor Type	Solid Stranded
Interface	RJ45
Positions/Loaded Contacts	8/8
Termination Type	IDC

Dimensions

Compatible Insulated Conductor Diameter, maximum	1.09 mm 0.043 in
Compatible Insulated Conductor Diameter, minimum	0.89 mm 0.035 in
Contact Plating Thickness	1.27 µm
Compatible Conductor Gauge, solid	26–23 AWG
Compatible Conductor Gauge, stranded	26–23 AWG

Electrical Specifications

Current Rating, maximum	0.75 A
Insulation Resistance, minimum	500 mOhm
Safety Voltage Rating	150 Vac

Material Specifications

6-2843007-1 | MP-6AU-Plug-A-1

Contact Base Material	Phosphor bronze
Contact Plating Material	Gold
Material Type	Glass filled polycarbonate

Mechanical Specifications

Plug Insertion Life, minimum	750 times
-------------------------------------	-----------

Environmental Specifications

Operating Temperature	-40 °C to +60 °C (-40 °F to +140 °F)
Relative Humidity	Up to 93%, non-condensing
Safety Standard	UL 1863

Packaging and Weights

Packaging quantity	100
Packaging Type	Bag Box Carton

Regulatory Compliance/Certifications

Agency	Classification
CHINA-ROHS	Below maximum concentration value
REACH-SVHC	Compliant as per SVHC revision on www.commscope.com/ProductCompliance
ROHS	Compliant

