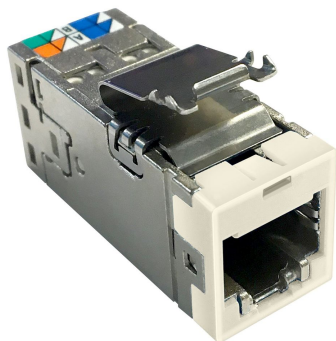


2153449-1 | AMP-TWIST SLX, 6AS,ALD



AMP-TWIST SLX Series Modular Jack, category 6A, shielded , 4 Pair, without dust cover, almond

Product Classification

Regional Availability	Asia Australia/New Zealand EMEA Latin America
Portfolio	NETCONNECT®
Product Type	Modular jack
Product Series	SLX Series

General Specifications

ANSI/TIA Category	6A
Cable Type	Shielded
Color	Almond
Conductor Type	Solid Stranded
Mounting	SL Series faceplates and panels
Outlet Type	Standard
Panel Cutout, recommended	14.78 x 20.07 mm (0.58 x 0.79 in)
Termination Tool	SL Termination tool
Termination Type	IDC
Transmission Standards	ANSI/TIA-568-C.2 ISO/IEC 11801 Class EA
Wiring	T568A T568B

Dimensions

Height	16.13 mm 0.635 in
Width	14.44 mm 0.569 in
Depth	36.8 mm 1.449 in
Compatible Cable Diameter, maximum	8.5 mm 0.335 in
Compatible Insulated Conductor Diameter, maximum	1.6 mm 0.063 in

2153449-1 | AMP-TWIST SLX, 6AS,ALD

Contact Plating Thickness	1.27 µm
Panel Thickness, recommended	1.6 mm 0.063 in
Compatible Conductor Gauge, solid	26–22 AWG
Compatible Conductor Gauge, stranded	26–24 AWG

Electrical Specifications

Remote Powering	Fully complies with the recommendations set forth by IEEE 802.3bt (Type 4) for the safe delivery of power over LAN cable when installed according to ISO/IEC 14763-2, CENELEC EN 50174-1, CENELEC EN 50174-2 or TIA TSB-184-A
------------------------	---

Material Specifications

Contact Base Material	Beryllium copper
Contact Plating Material	Gold
Material Type	Polycarbonate ZMAC 5

Environmental Specifications

Operating Temperature	-10 °C to +60 °C (+14 °F to +140 °F)
Flammability Rating	UL 94 V-0

Packaging and Weights

Packaging quantity	24
Packaging Type	Bag Box

Regulatory Compliance/Certifications

Agency	Classification
CHINA-ROHS	Below maximum concentration value
RCM	Compliant to electrical safety, EMC, EME & telecommunications requirements
REACH-SVHC	Compliant as per SVHC revision on www.commscope.com/ProductCompliance
ROHS	Compliant

