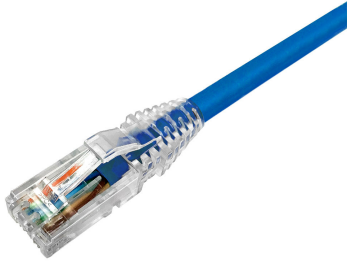


# NPC6AUVDB-BL



## NPC RJ45 Patch Cord, category 6A, Unshielded, CM (PVC), Blue

- High-performance patch cords exceeding industry standards supporting NETCONNECT channel specifications
- Standardized transparent, slim-line boots provides consistent patch cord appearance and supports highest density applications
- Colored clips are available to fit the transparent boot, eliminating the need of multiple colors for matching every jacket color
- Colored pull latch tabs are available for easier plug release handling from the modular jack

## Product Classification

<b>Regional Availability</b>	Asia   Australia/New Zealand   Latin America
<b>Portfolio</b>	NETCONNECT®
<b>Product Type</b>	Twisted pair patch cord
<b>Product Series</b>	NPC

## General Specifications

<b>ANSI/TIA Category</b>	6A
<b>Cable Type</b>	U/UTP (unshielded)
<b>Conductor Type</b>	Solid
<b>Interface Feature, connector A</b>	Standard
<b>Interface Feature, connector B</b>	Standard
<b>Interface, Connector A</b>	RJ45 plug
<b>Interface, Connector B</b>	RJ45 plug
<b>Jacket Color</b>	Blue
<b>Pairs, quantity</b>	4
<b>Wiring</b>	T568B

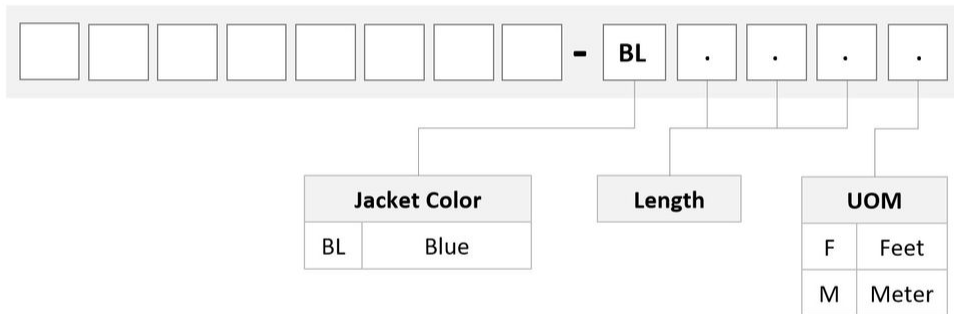
## Dimensions

<b>Cable Assembly Length, minimum (ft)</b>	1
<b>Cable Assembly Length, maximum (ft)</b>	100
<b>Diameter Over Jacket</b>	7.24 mm   0.285 in
<b>Compatible Conductor Gauge, solid</b>	24 AWG

## Ordering Tree

# NPC6AUVDB-BL

---



## Material Specifications

<b>Insulation Material</b>	Polyethylene
<b>Material Type</b>	PVC

## Mechanical Specifications

<b>Plug Insertion Life, minimum</b>	750 times
-------------------------------------	-----------

## Environmental Specifications

<b>Operating Temperature</b>	-20 °C to +60 °C (-4 °F to +140 °F)
<b>Relative Humidity</b>	Up to 93%, non-condensing
<b>Environmental Space</b>	Non-plenum
<b>Flammability Rating</b>	CM

# NPC6AUVDB-BL

---

**Safety Standard** UL 1863

## Packaging and Weights

**Packaging quantity** 1

## Included Products

**2 8 4 3 0 1 8 - 3**

**MP-6AU-Boot-71-1** — Integrated Boot and Pair Manager for MP-6AU, size 71, transparent

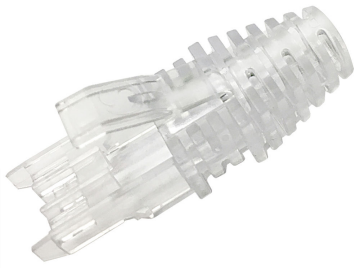
**6 - 2 8 4 3 0 0 8 - 1**

**MP-6AU-Plug-B-1** — Modular Plug, Category 6A/6, Unshielded, Cond Insulation OD - 0.79mm, 100 pcs

**C C 8 8 4 0 1 3 1 4 4 / B U**

**CC6ACM BLU C6A 4/24 SO U/UTP RL BULK** — CC6ACM Category 6A U/UTP Cable, non-plenum, blue jacket, 4 pair count, bulk length, reel

# 2843018-3 | MP-6AU-Boot-71-1



Integrated Boot and Pair Manager for MP-6AU, size 71, transparent

## Product Classification

<b>Regional Availability</b>	Asia   Australia/New Zealand   EMEA   Latin America   North America
<b>Portfolio</b>	CommScope®
<b>Product Type</b>	Modular plug boot

## General Specifications

<b>Boot Feature</b>	Color-clip compatible   Pull-tab compatible   Slimline   Snagless
<b>Color</b>	Clear
<b>Compatible Plug Type</b>	Cat 6   Cat 6A

## Dimensions

<b>Compatible Cable Diameter, maximum</b>	7.4 mm   0.291 in
<b>Compatible Cable Diameter, minimum</b>	6.8 mm   0.268 in

## Packaging and Weights

<b>Included</b>	Strain relief
<b>Packaging quantity</b>	100
<b>Packaging Type</b>	Bag   Box

## Regulatory Compliance/Certifications

<b>Agency</b>	<b>Classification</b>
CHINA-ROHS	Below maximum concentration value
REACH-SVHC	Compliant as per SVHC revision on <a href="http://www.commscope.com/ProductCompliance">www.commscope.com/ProductCompliance</a>
ROHS	Compliant



# 6-2843008-1 | MP-6AU-Plug-B-1



Modular Plug, Category 6A/6, Unshielded, Cond Insulation OD - 0.79 mm, 100 pcs

## Product Classification

<b>Regional Availability</b>	Asia   Australia/New Zealand   EMEA   Latin America   North America
<b>Portfolio</b>	CommScope®
<b>Product Type</b>	Modular plug

## General Specifications

<b>ANSI/TIA Category</b>	6   6A
<b>Cable Type</b>	Round, unshielded
<b>Conductor Type</b>	Solid   Stranded
<b>Interface</b>	RJ45
<b>Positions/Loaded Contacts</b>	8/8
<b>Termination Type</b>	IDC

## Dimensions

<b>Compatible Insulated Conductor Diameter, maximum</b>	0.89 mm   0.035 in
<b>Compatible Insulated Conductor Diameter, minimum</b>	0.69 mm   0.027 in
<b>Contact Plating Thickness</b>	1.27 µm
<b>Compatible Conductor Gauge, solid</b>	26–23 AWG
<b>Compatible Conductor Gauge, stranded</b>	26–23 AWG

## Electrical Specifications

<b>Current Rating, maximum</b>	0.75 A
<b>Insulation Resistance, minimum</b>	500 mOhm
<b>Safety Voltage Rating</b>	150 Vac

## Material Specifications

# 6-2843008-1 | MP-6AU-Plug-B-1

---

<b>Contact Base Material</b>	Phosphor bronze
<b>Contact Plating Material</b>	Gold
<b>Material Type</b>	Glass filled polycarbonate

## Mechanical Specifications

<b>Plug Insertion Life, minimum</b>	750 times
-------------------------------------	-----------

## Environmental Specifications

<b>Operating Temperature</b>	-40 °C to +60 °C (-40 °F to +140 °F)
<b>Relative Humidity</b>	Up to 93%, non-condensing
<b>Safety Standard</b>	UL 1863

## Packaging and Weights

<b>Packaging quantity</b>	100
<b>Packaging Type</b>	Bag   Box   Carton

## Regulatory Compliance/Certifications

<b>Agency</b>	<b>Classification</b>
CHINA-ROHS	Below maximum concentration value
REACH-SVHC	Compliant as per SVHC revision on <a href="http://www.commscope.com/ProductCompliance">www.commscope.com/ProductCompliance</a>
ROHS	Compliant



# CC884013144/BU | CC6ACM BLU C6A 4/24 SO U /UTP RL BULK

---

CC6ACM Category 6A U/UTP Cable, non-plenum, blue jacket, 4 pair count, bulk length, reel

## Product Classification

<b>Regional Availability</b>	Asia   Australia/New Zealand   Latin America   North America
<b>Portfolio</b>	CommScope®
<b>Product Type</b>	Twisted pair cable

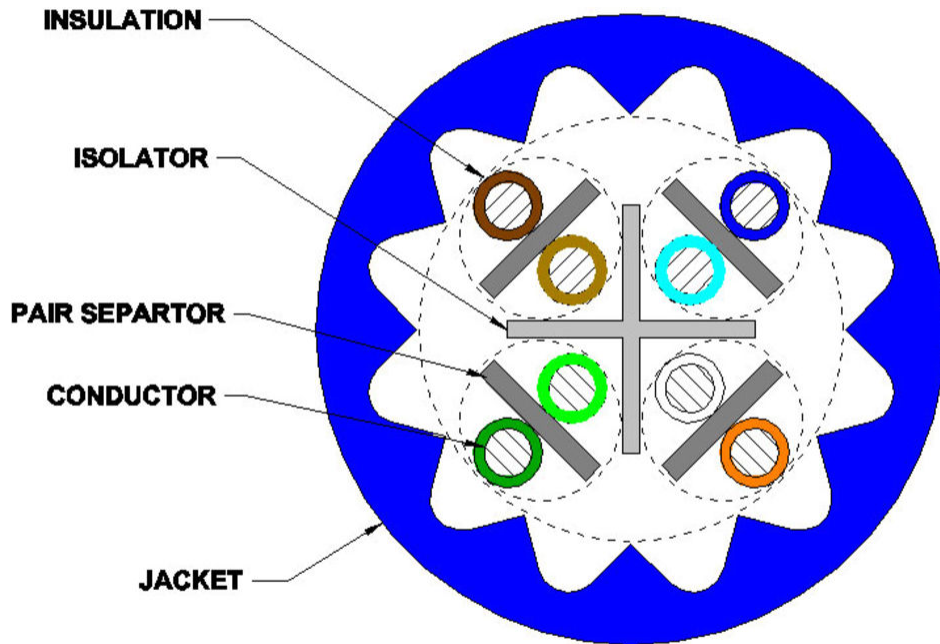
## General Specifications

<b>Product Number</b>	CC6ACM
<b>ANSI/TIA Category</b>	6A
<b>Cable Component Type</b>	Cordage
<b>Cable Type</b>	U/UTP (unshielded)
<b>Conductor Type, singles</b>	Solid
<b>Conductors, quantity</b>	8
<b>Jacket Color</b>	Blue
<b>Pairs, quantity</b>	4
<b>Separator Type</b>	Isolator
<b>Transmission Standards</b>	ANSI/TIA-568-C.2

## Dimensions

<b>Diameter Over Jacket, nominal</b>	0.285 in   7.239 mm
<b>Jacket Thickness</b>	0.06 in   1.524 mm
<b>Conductor Gauge, singles</b>	24 AWG

## Cross Section Drawing



## Electrical Specifications

<b>Characteristic Impedance</b>	100 ohm
<b>Characteristic Impedance Tolerance</b>	±15 ohm
<b>dc Resistance Unbalance, maximum</b>	4 %
<b>dc Resistance, maximum</b>	9.38 ohms/100 m   2.859 ohms/100 ft
<b>Dielectric Strength, minimum</b>	1500 Vac   2500 Vdc
<b>Mutual Capacitance at Frequency</b>	6.0 nF/100 m @ 1 kHz
<b>Nominal Velocity of Propagation (NVP)</b>	67 %
<b>Operating Frequency, maximum</b>	550 MHz
<b>Operating Voltage, maximum</b>	80 V
<b>Remote Powering</b>	Fully complies with the recommendations set forth by IEEE 802.3bt (Type 4) for the safe delivery of power over LAN cable when installed according to ISO/IEC 14763-2,

# CC884013144/BU | CC6ACM BLU C6A 4/24 SO U /UTP RL BULK

---

CENELEC EN 50174-1, CENELEC EN 50174-2 or TIA TSB-184-A

**Safety Voltage Rating** 300 V

## Material Specifications

**Conductor Material** Bare copper

**Insulation Material** Polyolefin

**Jacket Material** PVC

**Separator Material** Polyolefin

**Separator 2 Material** Polyolefin

## Mechanical Specifications

**Pulling Tension, maximum** 25 lb | 11.34 kg

## Environmental Specifications

**Installation temperature** 0 °C to +60 °C (+32 °F to +140 °F)

**Operating Temperature** -20 °C to +60 °C (-4 °F to +140 °F)

**Environmental Space** Non-plenum

**Flame Test Method** CM

## Packaging and Weights

**Cable weight** 36.99 lb/kft | 5.114 kg/km

## Regulatory Compliance/Certifications

### Agency

ISO 9001:2015

### Classification

Designed, manufactured and/or distributed under this quality management system

