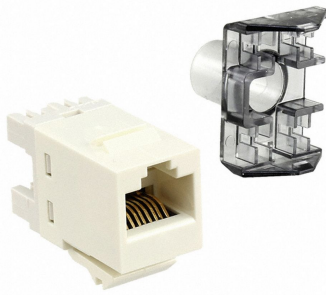


1375055-1



SL110 Series Modular Jack, RJ45, category 6, T568A/T568B, unshielded, without dust cover, light almond

Product Classification

Regional Availability	Asia Australia/New Zealand EMEA Latin America
Portfolio	NETCONNECT®
Product Type	Modular jack
Product Series	SL Series

General Specifications

ANSI/TIA Category	6
Cable Type	Unshielded
Color	Almond
Conductor Type	Solid Stranded
Mounting	SL Series faceplates and panels
Outlet Feature	Inverted jack face
Outlet Type	Standard
Panel Cutout, recommended	14.78 x 20.07 mm (0.58 x 0.79 in)
Termination Punchdowns, minimum	200 times
Termination Tool	SL Termination tool
Termination Type	IDC
Transmission Standards	ANSI/TIA-568-C.2 ISO/IEC 11801 Class E
Wiring	T568A T568B

Dimensions

Height	16.26 mm 0.64 in
Width	14.48 mm 0.57 in
Depth	30.48 mm 1.2 in

1375055-1

Compatible Insulated Conductor Diameter, maximum	1.45 mm 0.057 in
Contact Plating Thickness	1.27 µm
Panel Thickness, recommended	1.6 mm 0.063 in
Compatible Conductor Gauge, solid	24–22 AWG
Compatible Conductor Gauge, stranded	26–24 AWG

Electrical Specifications

Remote Powering	Fully complies with the recommendations set forth by IEEE 802.3bt (Type 4) for the safe delivery of power over LAN cable when installed according to ISO/IEC 14763-2, CENELEC EN 50174-1, CENELEC EN 50174-2 or TIA TSB-184-A
Safety Voltage Rating	150 Vac

Material Specifications

Contact Base Material	Beryllium copper
Contact Plating Material	Gold
Material Type	Polycarbonate

Mechanical Specifications

Plug Insertion Life, minimum	750 times
Plug Retention Force, minimum	89 N 20.008 lbf

Environmental Specifications

Operating Temperature	-40 °C to +70 °C (-40 °F to +158 °F)
Flammability Rating	UL 94 V-0
Safety Standard	CSA cUL

Packaging and Weights

Included	Strain relief cap
Packaging quantity	1
Packaging Type	Bag

Regulatory Compliance/Certifications

Agency	Classification
CHINA-ROHS	Below maximum concentration value
RCM	Compliant to electrical safety, EMC, EME & telecommunications requirements

1375055-1

REACH-SVHC

Compliant as per SVHC revision on www.commscope.com/ProductCompliance

ROHS

Compliant

