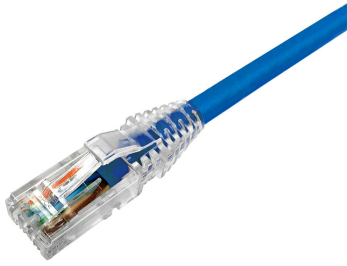


NPC06UVDB-BL



NPC RJ45 Patch Cord, category 6, Unshielded, CM (PVC), Blue

- High-performance patch cords exceeding industry standards supporting NETCONNECT channel specifications
- Standardized transparent, slim-line boots provides consistent patch cord appearance and supports highest density applications
- Colored clips are available to fit the transparent boot, eliminating the need of multiple colors for matching every jacket color
- Colored pull latch tabs are available for easier plug release handling from the modular jack

Product Classification

Regional Availability	Asia Australia/New Zealand Latin America
Portfolio	NETCONNECT®
Product Type	Twisted pair patch cord
Product Series	NPC

General Specifications

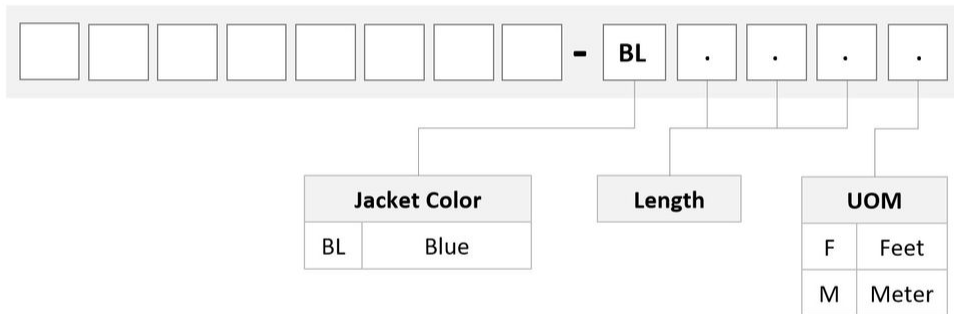
ANSI/TIA Category	6
Cable Type	U/UTP (unshielded)
Conductor Type	Stranded
Interface Feature, connector A	Standard
Interface Feature, connector B	Standard
Interface, Connector A	RJ45 plug
Interface, Connector B	RJ45 plug
Jacket Color	Blue
Pairs, quantity	4
Wiring	T568B

Dimensions

Cable Assembly Length, minimum (ft)	1
Cable Assembly Length, maximum (ft)	100
Diameter Over Jacket	5.97 mm 0.235 in
Compatible Conductor Gauge, stranded	24 AWG

Ordering Tree

NPC06UVDB-BL



Material Specifications

Insulation Material Polyethylene

Material Type PVC

Mechanical Specifications

Plug Insertion Life, minimum 750 times

Environmental Specifications

Operating Temperature -20 °C to +60 °C (-4 °F to +140 °F)

Relative Humidity Up to 93%, non-condensing

Environmental Space Non-plenum

Flammability Rating CM

NPC06UVDB-BL

Safety Standard UL 1863

Packaging and Weights

Packaging quantity 1

Regulatory Compliance/Certifications

Agency

RCM

Classification

Compliant to electrical safety, EMC, EME & telecommunications requirements



Included Products

2 8 4 3 0 2 0 - 3

MP-6AU-Boot-59-1 — Integrated Boot and Pair Manager for MP-6AU, size 59, transparent

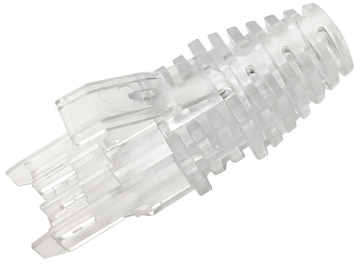
6 - 2 8 4 3 0 0 7 - 1

MP-6AU-Plug-A-1 — Modular Plug, Category 6A/6, Unshielded, Cond Insulation OD - 0.99mm, 100 pcs

C C 8 8 6 2 7 4 4 / B U

CC6CM BLU 4/24 SR U/UTP RL BULK — CC6CM Category 6 U/UTP Cable, non-plenum, blue jacket, 4 pair bulk length reel

2843020-3 | MP-6AU-Boot-59-1



Integrated Boot and Pair Manager for MP-6AU, size 59, transparent

Product Classification

Regional Availability	Asia Australia/New Zealand EMEA Latin America North America
Portfolio	CommScope®
Product Type	Modular plug boot

General Specifications

Boot Feature	Color-clip compatible Pull-tab compatible Slimline Snagless
Color	Clear
Compatible Plug Type	Cat 6 Cat 6A

Dimensions

Compatible Cable Diameter, maximum	6.2 mm 0.244 in
Compatible Cable Diameter, minimum	5.6 mm 0.22 in

Packaging and Weights

Included	Strain relief
Packaging quantity	100
Packaging Type	Bag Box

Regulatory Compliance/Certifications

Agency	Classification
CHINA-ROHS	Below maximum concentration value
REACH-SVHC	Compliant as per SVHC revision on www.commscope.com/ProductCompliance
ROHS	Compliant



6-2843007-1 | MP-6AU-Plug-A-1



Modular Plug, Category 6A/6, Unshielded, Cond Insulation OD - 0.99 mm, 100 pcs

Product Classification

Regional Availability	Asia Australia/New Zealand EMEA Latin America North America
Portfolio	CommScope®
Product Type	Modular plug

General Specifications

ANSI/TIA Category	6 6A
Cable Type	Round, unshielded
Conductor Type	Solid Stranded
Interface	RJ45
Positions/Loaded Contacts	8/8
Termination Type	IDC

Dimensions

Compatible Insulated Conductor Diameter, maximum	1.09 mm 0.043 in
Compatible Insulated Conductor Diameter, minimum	0.89 mm 0.035 in
Contact Plating Thickness	1.27 µm
Compatible Conductor Gauge, solid	26–23 AWG
Compatible Conductor Gauge, stranded	26–23 AWG

Electrical Specifications

Current Rating, maximum	0.75 A
Insulation Resistance, minimum	500 mOhm
Safety Voltage Rating	150 Vac

Material Specifications

6-2843007-1 | MP-6AU-Plug-A-1

Contact Base Material	Phosphor bronze
Contact Plating Material	Gold
Material Type	Glass filled polycarbonate

Mechanical Specifications

Plug Insertion Life, minimum	750 times
-------------------------------------	-----------

Environmental Specifications

Operating Temperature	-40 °C to +60 °C (-40 °F to +140 °F)
Relative Humidity	Up to 93%, non-condensing
Safety Standard	UL 1863

Packaging and Weights

Packaging quantity	100
Packaging Type	Bag Box Carton

Regulatory Compliance/Certifications

Agency	Classification
CHINA-ROHS	Below maximum concentration value
REACH-SVHC	Compliant as per SVHC revision on www.commscope.com/ProductCompliance
ROHS	Compliant



CC8862744/BU | CC6CM BLU 4/24 SR U/UTP RL BULK

CC6CM Category 6 U/UTP Cable, non-plenum, blue jacket, 4 pair bulk length reel

Product Classification

Regional Availability	North America
Portfolio	CommScope®
Product Type	Twisted pair cable

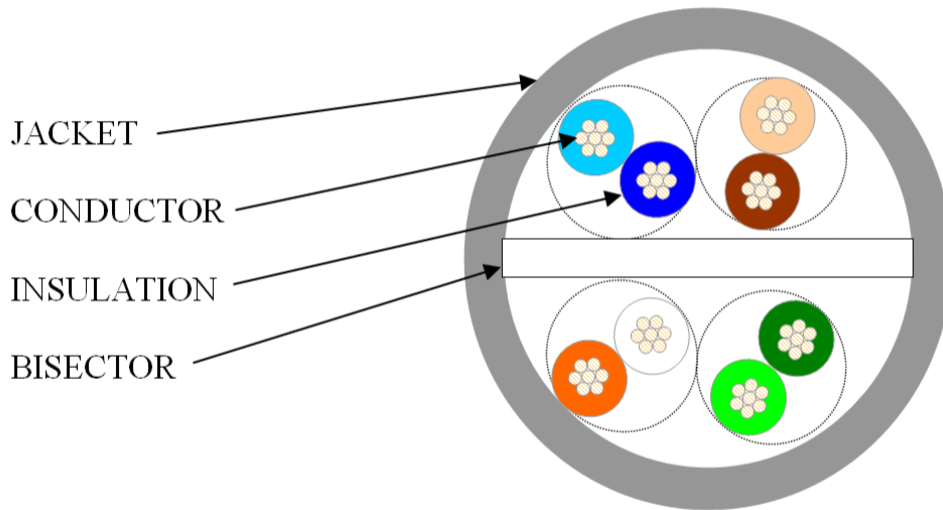
General Specifications

Product Number	CC6CM
ANSI/TIA Category	6
Cable Component Type	Cordage
Cable Type	U/UTP (unshielded)
Conductor Type, singles	Stranded
Conductors, quantity	8
Jacket Color	Blue
Pairs, quantity	4
Separator Type	Bisector
Transmission Standards	ANSI/TIA-568-C.2 CENELEC EN 50288-6-1 ISO/IEC 11801 Class E

Dimensions

Cable Length, special	Bulk length
Diameter Over Jacket, nominal	0.235 in 5.969 mm
Jacket Thickness	0.022 in 0.559 mm
Conductor Gauge, singles	24 AWG

Cross Section Drawing



Electrical Specifications

Characteristic Impedance	100 ohm
dc Resistance Unbalance, maximum	5 %
dc Resistance, maximum	9.38 ohms/100 m 2.859 ohms/100 ft
Dielectric Strength, minimum	1500 Vac 2500 Vdc
Mutual Capacitance at Frequency	5.6 nF/100 m @ 1 kHz
Nominal Velocity of Propagation (NVP)	69 %
Operating Frequency, maximum	300 MHz
Operating Voltage, maximum	80 V
Remote Powering	Fully complies with the recommendations set forth by IEEE 802.3bt (Type 4) for the safe delivery of power over LAN cable when installed according to ISO/IEC 14763-2, CENELEC EN 50174-1, CENELEC EN 50174-2 or TIA TSB-184-A

CC8862744/BU | CC6CM BLU 4/24 SR U/UTP RL BULK

Safety Voltage Rating 300 V

Material Specifications

Conductor Material Tinned copper

Insulation Material Polyolefin

Jacket Material PVC

Separator Material Polyolefin

Mechanical Specifications

Pulling Tension, maximum 25 lb | 11.34 kg

Environmental Specifications

Installation temperature 0 °C to +60 °C (+32 °F to +140 °F)

Operating Temperature -20 °C to +60 °C (-4 °F to +140 °F)

Environmental Space Non-plenum

Flame Test Method CM

Packaging and Weights

Cable weight 25 lb/kft | 3.456 kg/km

Packaging Type Reel

Regulatory Compliance/Certifications

Agency

ISO 9001:2015

Classification

Designed, manufactured and/or distributed under this quality management system

