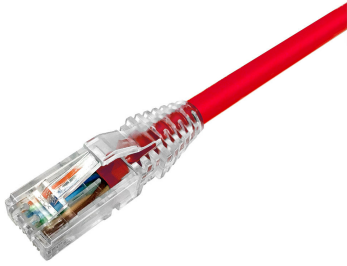


NPC6AUVDB-RD



Product Classification

Regional Availability	Asia Australia/New Zealand Latin America
Portfolio	NETCONNECT®
Product Type	Twisted pair patch cord
Product Series	NPC

General Specifications

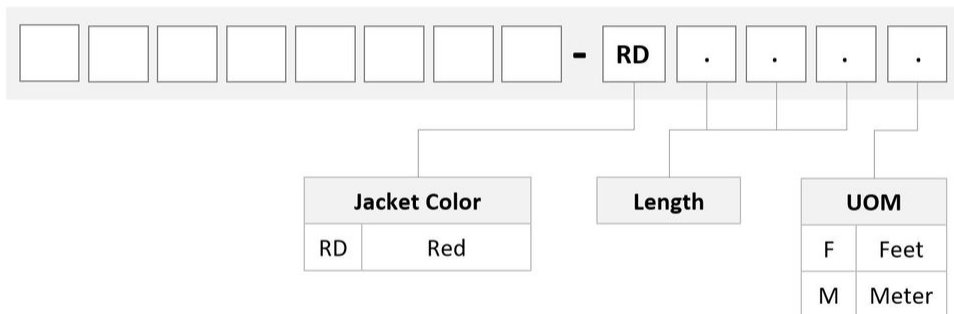
ANSI/TIA Category	6A
Cable Type	U/UTP (unshielded)
Conductor Type	Solid
Interface Feature, connector A	Standard
Interface Feature, connector B	Standard
Interface, Connector A	RJ45 plug
Interface, Connector B	RJ45 plug
Jacket Color	Red
Pairs, quantity	4
Wiring	T568B

Dimensions

Cable Assembly Length, minimum (ft)	1
Cable Assembly Length, maximum (ft)	100
Diameter Over Jacket	7.24 mm 0.285 in
Compatible Conductor Gauge, solid	24 AWG

Ordering Tree

NPC6AUVDB-RD



Material Specifications

Insulation Material Polyethylene

Material Type PVC

Mechanical Specifications

Plug Insertion Life, minimum 750 times

Environmental Specifications

Operating Temperature -20 °C to +60 °C (-4 °F to +140 °F)

Relative Humidity Up to 93%, non-condensing

Environmental Space Non-plenum

Flammability Rating CM

NPC6AUVDB-RD

Safety Standard UL 1863

Packaging and Weights

Packaging quantity 1

Included Products

2843018-3
MP-6AU-Boot-71-1

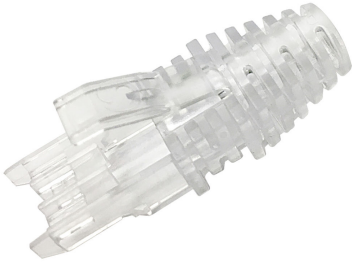
—

6-2843008-1
MP-6AU-Plug-B-1

—

C C 8 8 4 0 1 3 7 4 4 / B U

CC6ACM RED C6A 4/24 SO U/UTP RL BULK — CC6ACM Category 6A U/UTP Cable, non-plenum, red jacket, 4 pair count, bulk length, reel



Product Classification

Regional Availability	Asia Australia/New Zealand EMEA Latin America North America
Portfolio	CommScope®
Product Type	Modular plug boot

General Specifications

Boot Feature	Color-clip compatible Pull-tab compatible Slimline Snagless
Color	Clear
Compatible Plug Type	Cat 6 Cat 6A

Dimensions

Compatible Cable Diameter, maximum	7.4 mm 0.291 in
Compatible Cable Diameter, minimum	6.8 mm 0.268 in

Packaging and Weights

Included	Strain relief
Packaging quantity	100
Packaging Type	Bag Box

Regulatory Compliance/Certifications

Agency	Classification
CHINA-ROHS	Below maximum concentration value
REACH-SVHC	Compliant as per SVHC revision on www.commscope.com/ProductCompliance
ROHS	Compliant



6-2843008-1 | MP-6AU-Plug-B-1



Product Classification

Regional Availability

Asia | Australia/New Zealand | EMEA | Latin America | North America

Portfolio

CommScope®

Product Type

Modular plug

General Specifications

ANSI/TIA Category

6 | 6A

Cable Type

Round, unshielded

Conductor Type

Solid | Stranded

Interface

RJ45

Positions/Loaded Contacts

8/8

Termination Type

IDC

Dimensions

Compatible Insulated Conductor Diameter, maximum

0.89 mm | 0.035 in

Compatible Insulated Conductor Diameter, minimum

0.69 mm | 0.027 in

Contact Plating Thickness

1.27 µm

Compatible Conductor Gauge, solid

26–23 AWG

Compatible Conductor Gauge, stranded

26–23 AWG

Electrical Specifications

Current Rating, maximum

0.75 A

Insulation Resistance, minimum

500 mOhm

Safety Voltage Rating

150 Vac

Material Specifications

6-2843008-1 | MP-6AU-Plug-B-1

Contact Base Material	Phosphor bronze
Contact Plating Material	Gold
Material Type	Glass filled polycarbonate

Mechanical Specifications

Plug Insertion Life, minimum	750 times
-------------------------------------	-----------

Environmental Specifications

Operating Temperature	-40 °C to +60 °C (-40 °F to +140 °F)
Relative Humidity	Up to 93%, non-condensing
Safety Standard	UL 1863

Packaging and Weights

Packaging quantity	100
Packaging Type	Bag Box Carton

Regulatory Compliance/Certifications

Agency	Classification
CHINA-ROHS	Below maximum concentration value
REACH-SVHC	Compliant as per SVHC revision on www.commscope.com/ProductCompliance
ROHS	Compliant



CC884013744/BU | CC6ACM RED C6A 4/24 SO U /UTP RL BULK

CC6ACM Category 6A U/UTP Cable, non-plenum, red jacket, 4 pair count, bulk length, reel

Product Classification

Regional Availability	Asia Australia/New Zealand Latin America North America
Portfolio	CommScope®
Product Type	Twisted pair cable

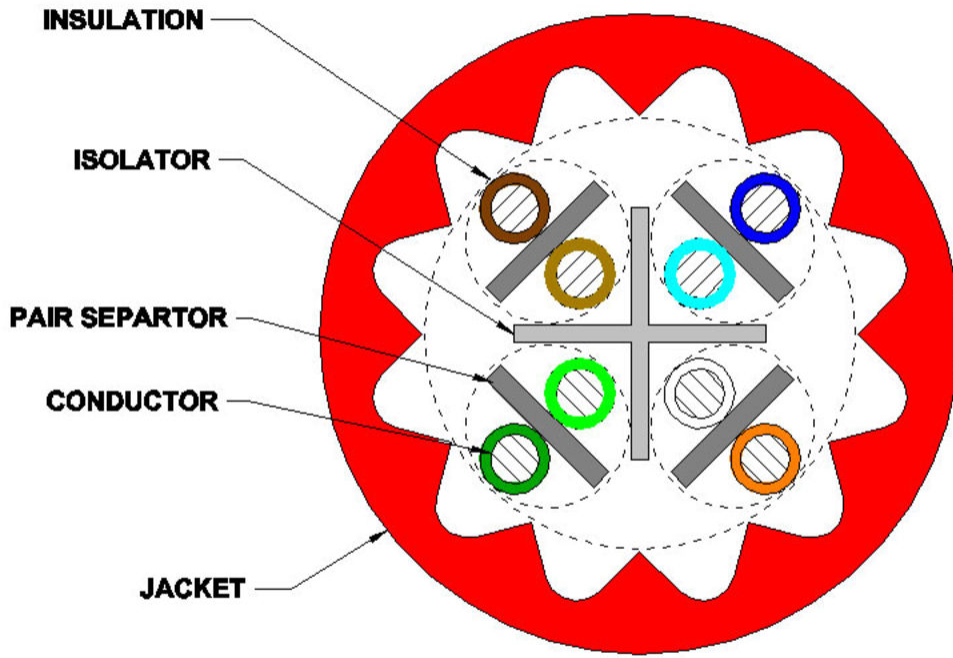
General Specifications

Product Number	CC6ACM
ANSI/TIA Category	6A
Cable Component Type	Cordage
Cable Type	U/UTP (unshielded)
Conductor Type, singles	Solid
Conductors, quantity	8
Jacket Color	Red
Pairs, quantity	4
Separator Type	Isolator
Transmission Standards	ANSI/TIA-568-C.2

Dimensions

Diameter Over Jacket, nominal	0.285 in 7.239 mm
Jacket Thickness	0.06 in 1.524 mm
Conductor Gauge, singles	24 AWG

Cross Section Drawing



Electrical Specifications

Characteristic Impedance	100 ohm
Characteristic Impedance Tolerance	±15 ohm
dc Resistance Unbalance, maximum	4 %
dc Resistance, maximum	9.38 ohms/100 m 2.859 ohms/100 ft
Dielectric Strength, minimum	1500 Vac 2500 Vdc
Mutual Capacitance at Frequency	6.0 nF/100 m @ 1 kHz
Nominal Velocity of Propagation (NVP)	67 %
Operating Frequency, maximum	550 MHz
Operating Voltage, maximum	80 V
Remote Powering	Fully complies with the recommendations set forth by IEEE 802.3bt (Type 4) for the safe delivery of power over LAN cable when installed according to ISO/IEC 14763-2,

CC884013744/BU | CC6ACM RED C6A 4/24 SO U /UTP RL BULK

CENELEC EN 50174-1, CENELEC EN 50174-2 or TIA TSB-184-A

Safety Voltage Rating 300 V

Material Specifications

Conductor Material Bare copper

Insulation Material Polyolefin

Jacket Material PVC

Separator Material Polyolefin

Separator 2 Material Polyolefin

Mechanical Specifications

Pulling Tension, maximum 25 lb | 11.34 kg

Environmental Specifications

Installation temperature 0 °C to +60 °C (+32 °F to +140 °F)

Operating Temperature -20 °C to +60 °C (-4 °F to +140 °F)

Environmental Space Non-plenum

Flame Test Method CM

Packaging and Weights

Cable weight 36.99 lb/kft | 5.114 kg/km

Regulatory Compliance/Certifications

Agency	Classification
CHINA-ROHS	Below maximum concentration value
ISO 9001:2015	Designed, manufactured and/or distributed under this quality management system
REACH-SVHC	Compliant as per SVHC revision on www.commscope.com/ProductCompliance
ROHS	Compliant

